



Biological Classification MCQs.

1. According to R.H. Whittaker, Euglena and Chlorella are placed in which kingdom?
- A. Fungi
 - B. Monera
 - C. Protista
 - D. Plantae

Biology at Ease



2. Which of the following are not included in any of the kingdoms of Whittaker?

- A. Bacteria
- B. Viruses
- C. Slime moulds
- D. Protozoan

Biology at Ease



3. Which bacteria oxidise various inorganic substances such as nitrates, nitrites and ammonia and use the released energy for their ATP production?
- A. Archaeobacteria
 - B. Photosynthetic autotrophs
 - C. Chemosynthetic autotrophs
 - D. Heterotrophs



4. Which types of bacteria play a great role in recycling nutrients?
- A. Archaeobacteria
 - B. Photosynthetic autotrophic bacteria
 - C. Chemosynthetic autotrophic bacteria
 - D. Heterotrophic Bacteria



5. Select the wrong statements:
- A. W.M. Stanley showed that viruses could be crystallised
 - B. The term 'Contagium vivum fluidum' was coined by M.W. Beijerinck
 - C. Mosaic disease in tobacco and AIDS in human being are caused by viruses
 - D. The viroids were discovered by D.J. Ivanowsky



6. Viruses have:

A. Both DNA & RNA

B. DNA enclosed in a protein coat

C. Prokaryotic nucleus

D. Single chromosome

Biology at Ease



Biological Classification MCQs.

7. Kingdom Animalia is characterized by
- A. Unicellular, prokaryotic and autotrophic
 - B. Multicellular, eukaryotic and heterotrophic
 - C. Multicellular, prokaryotic and saprophytic
 - D. Unicellular, eukaryotic and heterotrophic



Biological Classification MCQs.

8. Which option is associated with Basidiomycetes?

A. Rust, Smut, Ergot

B. Rust, Smut, Mushroom

C. Yeast, Rust, Rhizopus

D. Yeast, Smutt, Mushroom

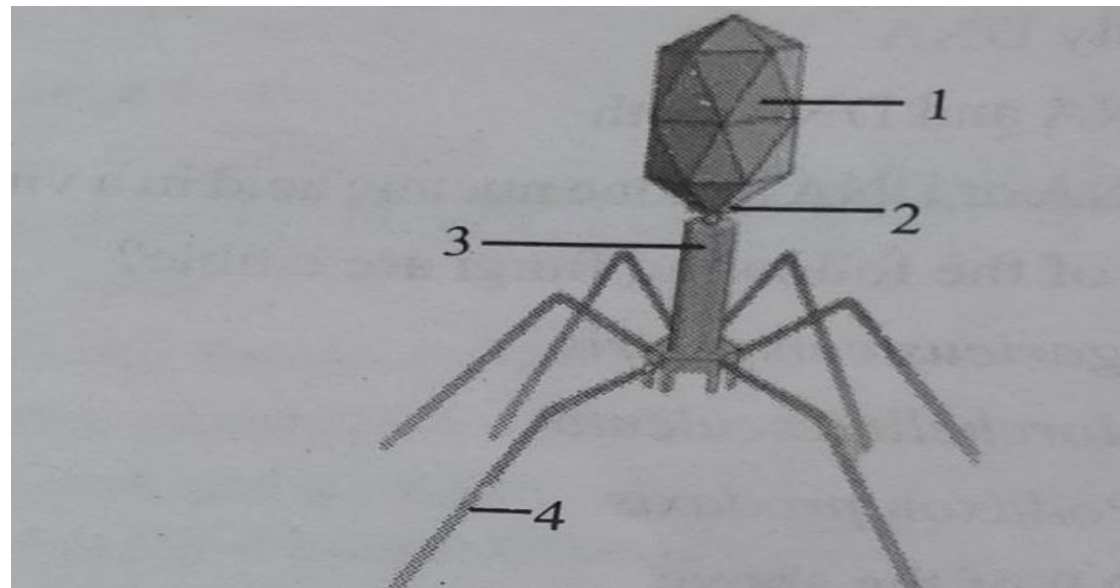
Biology at Ease



Biological Classification MCQs.

9. The given figure shows some structures labelled as 1,2,3&4. Which structure has the protein coat that encloses the nucleic acid?

- A. 1
- B. 2
- C. 3
- D. 4





Biological Classification MCQs.

10. Match Column I with Column II and select the option.

- a. A-II B-I C-IV D-III
- b. A-II B-IV C-I D-III
- c. A-IV B-I C-II E-III
- d. A-IV B-III C-II D-I

Column I (classes of fungi)	Column II (common name)
A. Phycomycetes	I. Sac fungi
B. Ascomycetes	II. Algal fungi
C. Basidiomycetes	III. Fungi imperfecti
D. Deuteromycetes	IV. Club fungi

**Biological Classification MCQs.**

11. Match column I (containing fungus name) with Column II (common name) and choose the correct options

a. A-I B-II C-III D-IV

b. A-II B-III C-IV D-I

c. A-III B-IV C-I D-II

d. A-IV B-III C-II D-I

Column I	Column II
A. Puccinia	I. Yeast
B. Ustilago	II. Mushroom
C. Agaricus	III. Smut fungus
D. Saccharomyces	IV. Rust fungus



12. Assertion: viruses are not included in any system of classification

Reason: Viruses are non living but develop living characters like multiplication, etc. When they come in contact with suitable host

- A. If both A&R are true and R is correct explanation of A
- B. If both A&R are true but R is not correct explanation of A
- C. If A is true but R is false
- D. If both A & R are false



13. The symbiotic association between fungi and algae is called

- A. Lichens
- B. Mycorrhiza
- C. Rhizome
- D. Endomycorrhiza

Biology at Ease



14. Lichens indicate SO_2 pollution because they

- A. Show association between algae and fungi
- B. Grow faster than others
- C. Are sensitive to SO_2
- D. Flourish in SO_2 rich environment

Biology at Ease



Biological Classification MCQs.

15. Match column I (characters/feature) with Column II (examples)

- a. A-III B-II C-I D-IV
- b. A-II B-III C-I C-IV
- c. A-II B-III C-IV D-I
- d. A-II B-IV C-III D-I

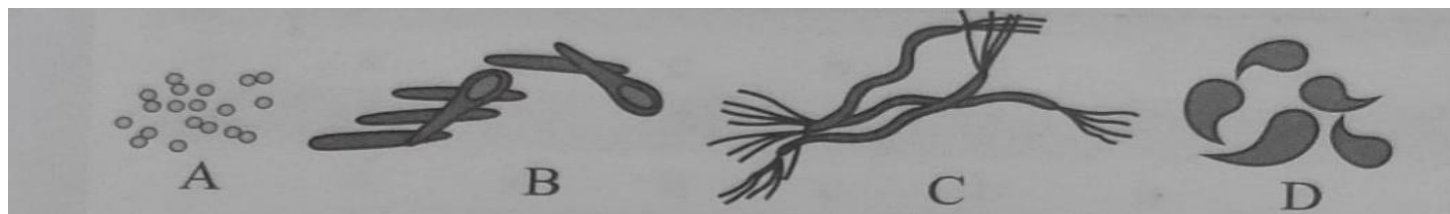
Column I	Column II
A. Red Dinoflagellates	I. Rhizopus
B. Unicellular fungi used to make bread & beer	II. Gonyaulax
C. Source of antibiotics	III. Yeast
D. Bread mould	IV. Penicillium



Biological Classification MCQs.

16. Choose the correct names of the different Bacteria according to their shapes

- a. A-cocci, B-bacillia, C-spirilla, D-vibrio
- b. A-bacillia, B-coccie, C-spirilla, D-vibrio
- c. A-spirilla, B-bacillia, C-cocci, D-vibrio
- d. A-spirilla, B-vibrio, C-cocci, D-bacilli





17. Which of the following shows coiled RNA strand and capsomeres? [NEET 2014]

- A. Retrovirus
- B. Polio virus
- C. Tobacco mosaic virus
- D. Measles virus

Biology at Ease



18. Which statement is wrong for virus? [AIPMT 2012 Pre]

- A. Antibiotics have no effect on them
- B. All are parasites
- C. All of them have helical symmetry
- D. They have ability to synthesize nucleic acids and proteins

Biology at Ease



19. The subunit of capsid is called

- A. Core
- B. Nucleotide
- C. Amino acid
- D. Capsomere

Biology at Ease



20. The genetic material of virus includes

- A. Only RNA
- B. Only DNA
- C. RNA and DNA both
- D. RNA or DNA, i.e., one nucleic acid in a virus

Biology at Ease



21. Match the type of protozoans given in column I with their examples given in Column II & choose the correct option

- a. A-I B-III C-IV D-II
- b. A-III B-I C-II D-IV
- c. A-III B-I C-IV D-II
- d. A-III B-IV C-I D-II

Column I	Column II
A. Amoeboid protozoans	I. Paramecium
B. Ciliated protozoans	II. Plasmodium
C. Flagellated protozoans	III. Amoeba
D. Sporozoans	IV. Trypanosoma

Biology at Ease



22. Which of the following class of protists is being described by the below statements?

- I. They are saprophytic protists
- II. Under suitable conditions, they form an aggregation (called Plasmodium) which may grow and spread over several feet
- III. During unfavourable conditions, the plasmodium differentiates and forms fruiting bodies bearing spores at their tips

- A. Euglenoids
- B. Dinoflagellates
- C. Slime moulds
- D. protozoans



23. The gut of cow and buffalo possess: [NEET 2015]

- A. Methanogens
- B. Cyanobacteria
- C. Fucus
- D. Chlorella

Biology at Ease



24. True nucleus is absent in: [NEET 2015]

A. Trichoderma

B. Volvox

C. Anabaena

D. Mucor

Biology at Ease



25. Cell wall is absent in: [NEET 2025 Re]

- A. Funaria
- B. Mycoplasma
- C. Nostoc
- D. Aspergillus

Biology at Ease



26. Halophiles, thermoacidophiles and methanogens:-

- A. Are ancient Bacteria
- B. Survive in extreme condition
- C. Have a complex cell wall
- D. All of these

Biology at Ease



27. Nitrifying Bacteria convert-

- A. Nitrogen into nitrates
- B. Ammonia or Ammonium compound into nitrates
- C. Nitrate into nitrogen
- D. Carbon dioxide into carbohydrates

Biology at Ease



28. Monerian, which devoid of cell wall is:

- A. Actinomycetes
- B. Mycoplasma
- C. Bacteria
- D. Cyanobacteria

Biology at Ease



29. Which of the following character is similar in cyanobacteria and green plants?

- A. Nitrogen fixation
- B. 80 S ribosome
- C. Chlorophyll a
- D. Nature of cell wall

Biology at Ease



30. During unfavourable conditions, slime moulds
- A. Form fruiting bodies bearing spores at their tips
 - B. Form aggregation called Plasmodium
 - C. Form an aggregation called pseudoplasmodium
 - D. Both a & b are correct



31. Which one of the following is a characteristic feature of chrysophytes?

- A. They are parasitic forms which cause disease in animals
- B. They have a protein rich layer called pellicle
- C. They are commonly called diatoms
- D. They are saprophytic protists



32. Membrane bound organelles are absent in

- A. Plasmodium
- B. Saccharomyces
- C. Streptococcus
- D. Chlamydomonas

Biology at Ease



33. Which of the followings is mainly produced by the activity of anaerobic bacteria on sewage ?

- A. Marsh gas
- B. Laughing gas
- C. Propane
- D. Mustard gas

Biology at Ease



34. Which of the following is true for kingdom animalia?

- A. Cell wall are present in animal cell
- B. Their mode of nutrition is holozoic
- C. They do not follow a definite growth pattern
- D. All of them are capable of locomotion



35. A dikaryon is formed in classes:

- A. Ascomycetes
- B. Basidiomycetes
- C. Both a&b
- D. Phycomycetes

Biology at Ease



36. Protista include

- A. All single celled prokaryotes
- B. All single celled Eukaryotes
- C. Only marine form eukaryotes
- D. Only marine prokaryotes

Biology at Ease



37. Which one of the following is not a character of Protista?

- A. Protists are prokaryotes
- B. Some have cell wall
- C. Mode of nutrition is both autotrophic and heterotrophic
- D. Membrane bounded cell organelles are present



38. Statement 1: archaebacteria differ from other Bacteria in having a different cell wall structure

Statement 2: methanogens are present in the gut of several ruminant animals

- A. Both statement 1 & 2 are correct
- B. Both statement 1 and 2 are incorrect
- C. Statement 1 is correct & 2 is incorrect
- D. Statement 1 is incorrect & 2 is correct



39. There exists a close association between the alga and the fungus within a lichen. The fungus

- A. Provides protection, anchorage and absorption for the algae
- B. Provides food for the alga
- C. Fixes the atmospheric nitrogen for the alga
- D. Releases oxygen for the alga

Biology at Ease



40. Which of the following is the use of lichens in case of Pollution?

- A. They promote pollution
- B. Lichens are not related with pollution
- C. They treat the polluted water
- D. They act as bioindicators of Pollution



41. Which statements are correct for protists?

- I. Unicellular prokaryotes
- II. Unicellular eukaryotes
- III. Multicellular Eukaryotes
- IV. Autotrophs and Heterotrophs

- a. I, II, III
- b. II, III, IV
- c. II, IV
- d. III, IV

Biology at Ease



42. Heterocysts present in Anabaena is specialised for

- A. Nitrogen fixation
- B. Food storage
- C. Fission
- D. Sexual reproduction

Biology at Ease



43. Diatomaceous earth is formed due to which substance?

- A. Phosphorus
- B. Calcium
- C. Silica
- D. Copper

Biology at Ease



Biological Classification MCQs.

Answers

- 1) C
- 2) B
- 3) C
- 4) C
- 5) D
- 6) B
- 7) B
- 8) B
- 9) A
- 10) A
- 11) D
- 12) A
- 13) A
- 14) C
- 15) C
- 16) A
- 17) C
- 18) C
- 19) D
- 20) D

- 21) C
- 22) C
- 23) A
- 24) C
- 25) B
- 26) D
- 27) B
- 28) B
- 29) C
- 30) A
- 31) C
- 32) C
- 33) A
- 34) B
- 35) C
- 36) B
- 37) A
- 38) A
- 39) A
- 40) D

- 41) C
- 42) A
- 43) C